

## Setup Account (Reference)

Setup Online Account is the process where the customer unique ID is assigned to the reference field in the VST user account, and no email or password are assigned. At a later time, if the user chooses one of the download options from the online viewer, the VST system will walk them thru providing the needed information, and, if needed, merge their new account with a pre-existing account they may have.

## Setup Account (Full)

Setup Full Account is the process where the customer created a complete VST user account, including email and password. If the email exists in the VST system, this process cannot complete without the user providing the customer their password so the email/password pair can be passed to VST to obtain an access token.

## Get Access Token

Get Access Token is the process where the customer either retrieves the stored access token from their system, or passes the required information to the VST system to obtain one (email/password pair, or reference id with the correct API key).

## Assign Content

Assign Content is the process where the customer uses the VST web services to create a code for a specified asset, and then redeems that code for the specified user. There are two triggers that can facilitate this process: a bulk-redeem process that is controlled by a list of users; or a one-by-one process triggered by users' actions.

## Inventory

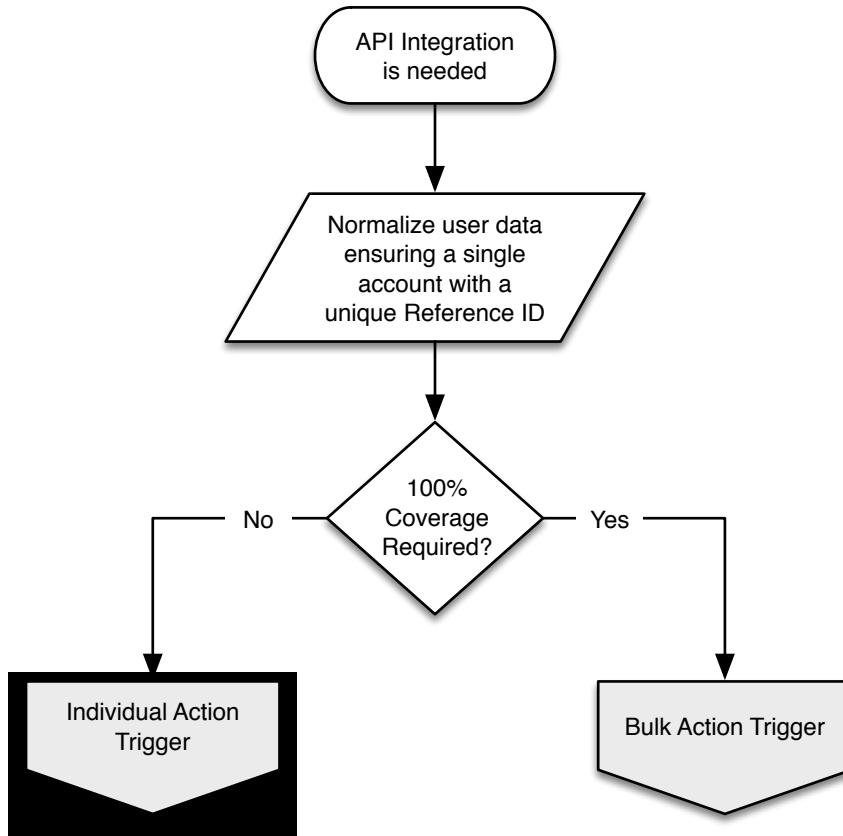
Use the Product Catalog API to populate the site with content links. There is an optional Covers Services API available to retrieve a thumbnail for your site's catalog.

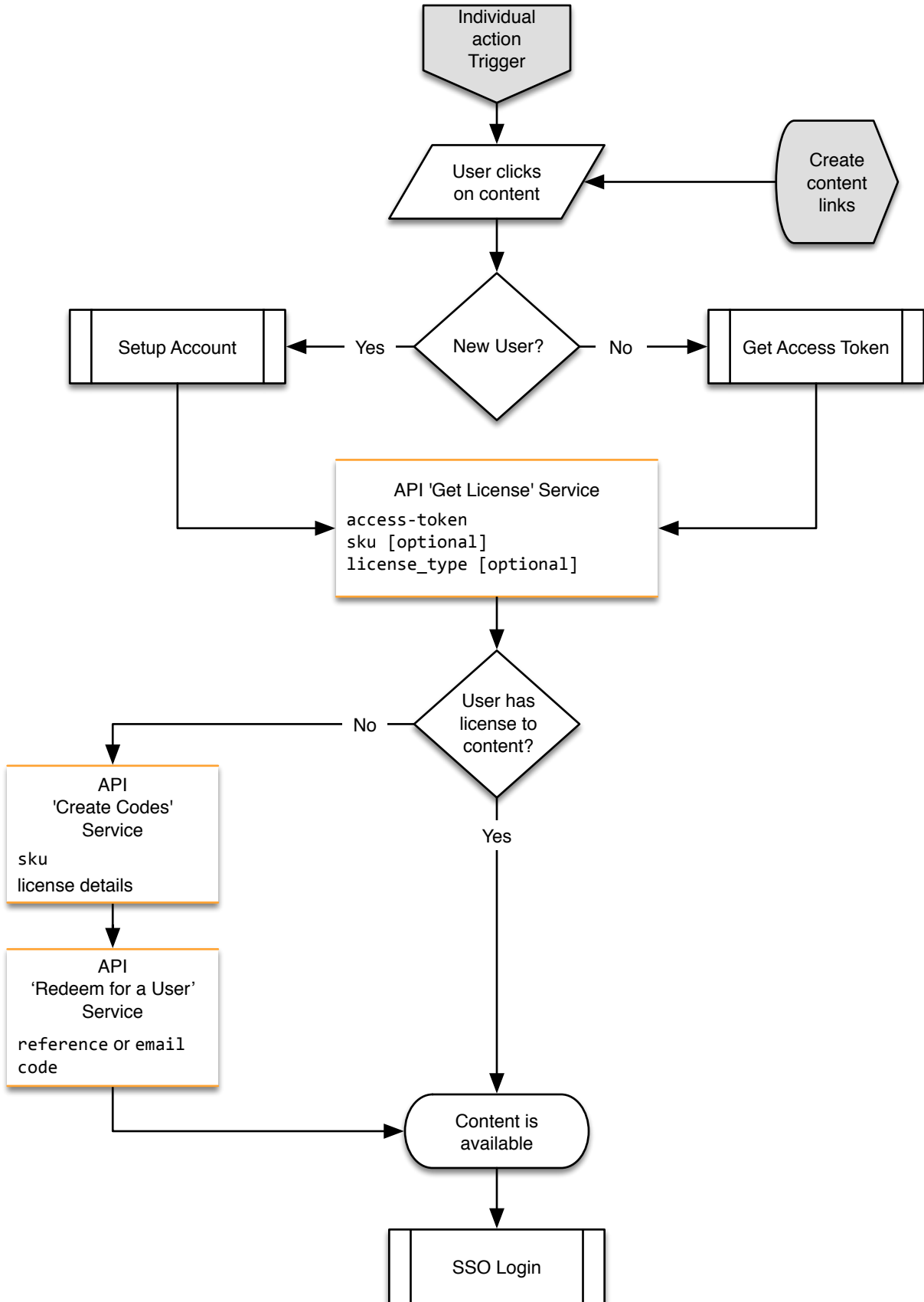
## SSO Login

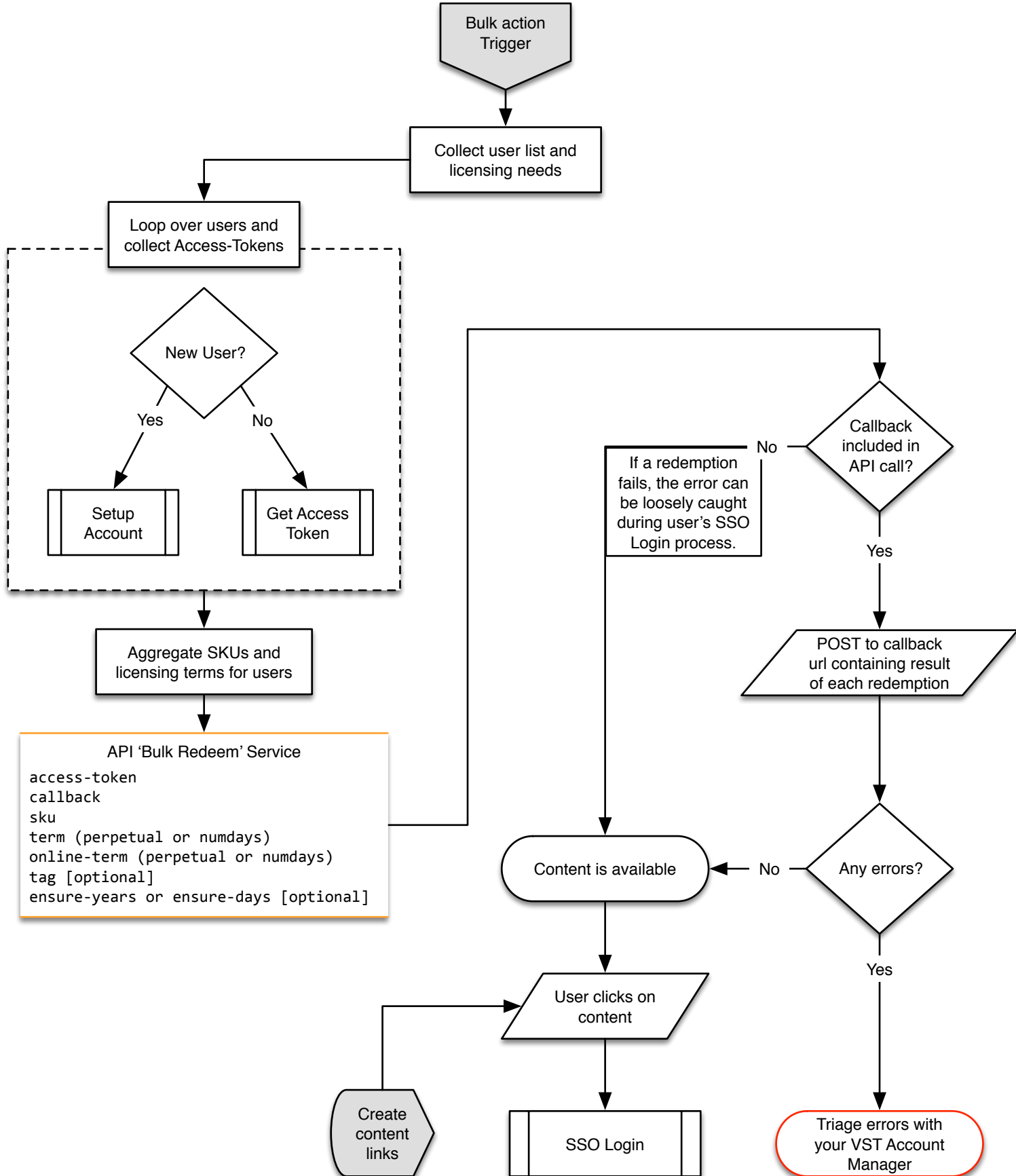
SSO Login is the process where the customer uses the acquired access token to log the user into Bookshelf Online without any user interaction.

## Refund Content

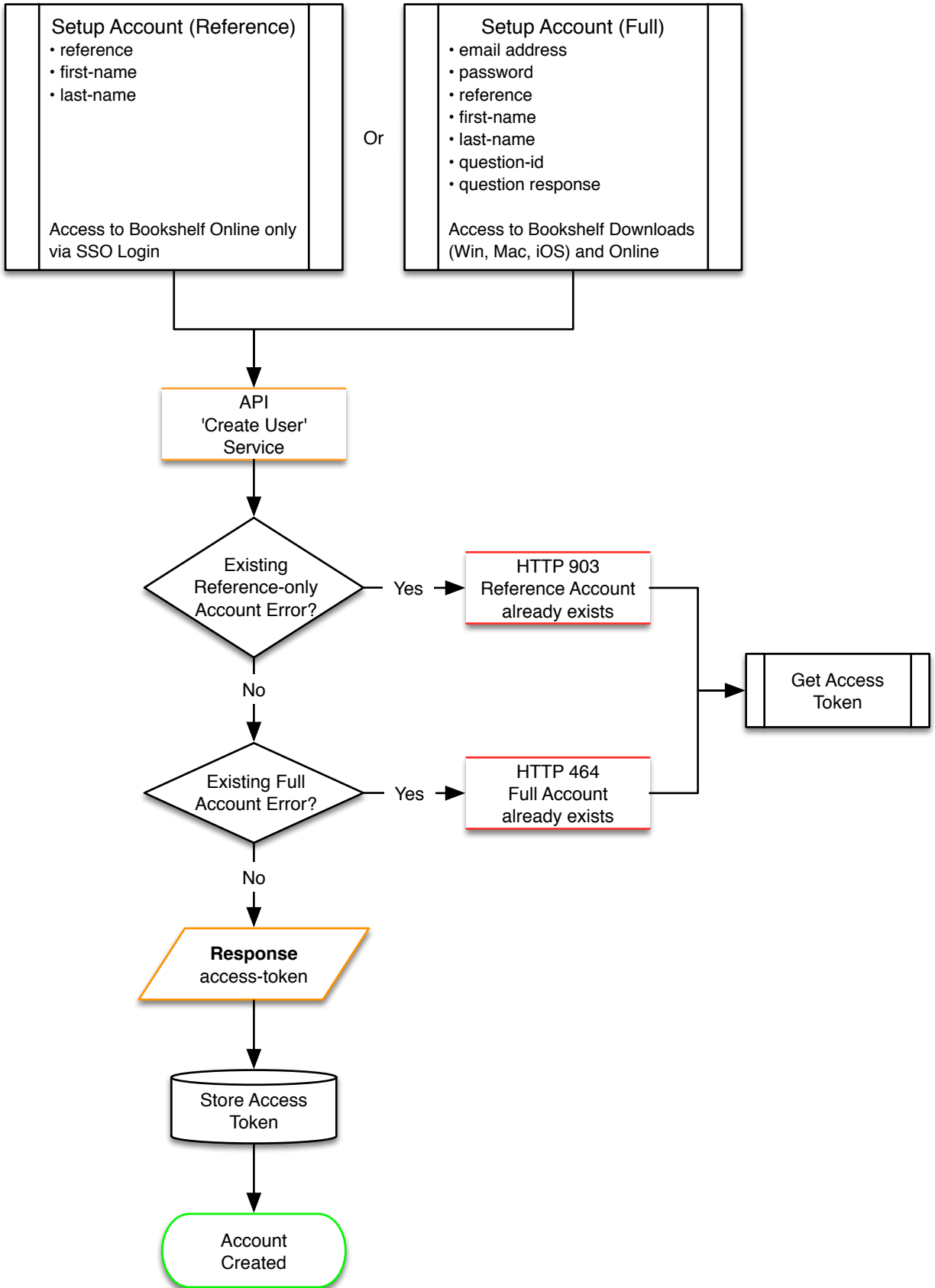
If a customer decides he/she no longer needs the content, your store may provide the opportunity for the code to be returned. This process will determine if it is refundable, and how to submit the refund.

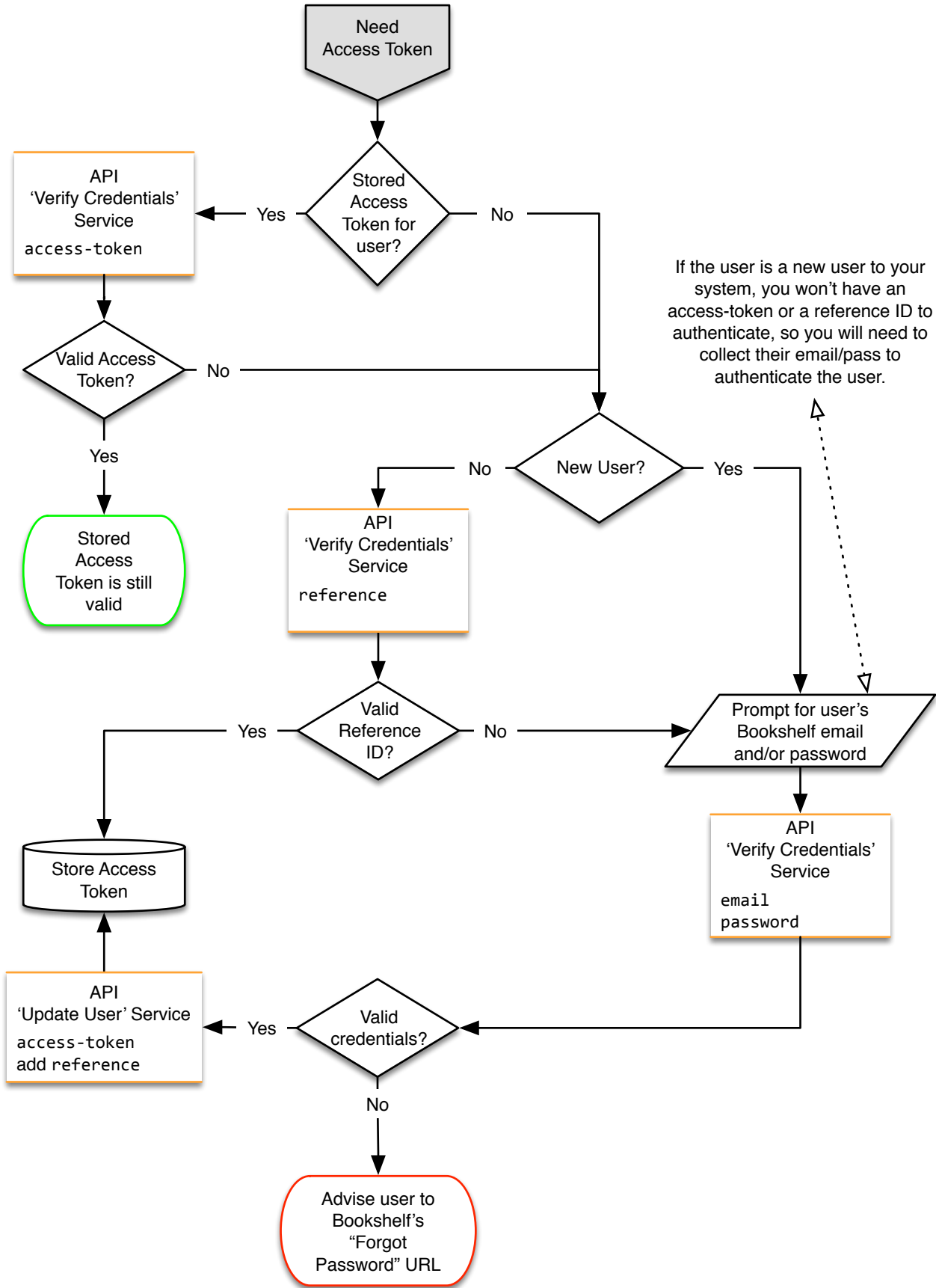


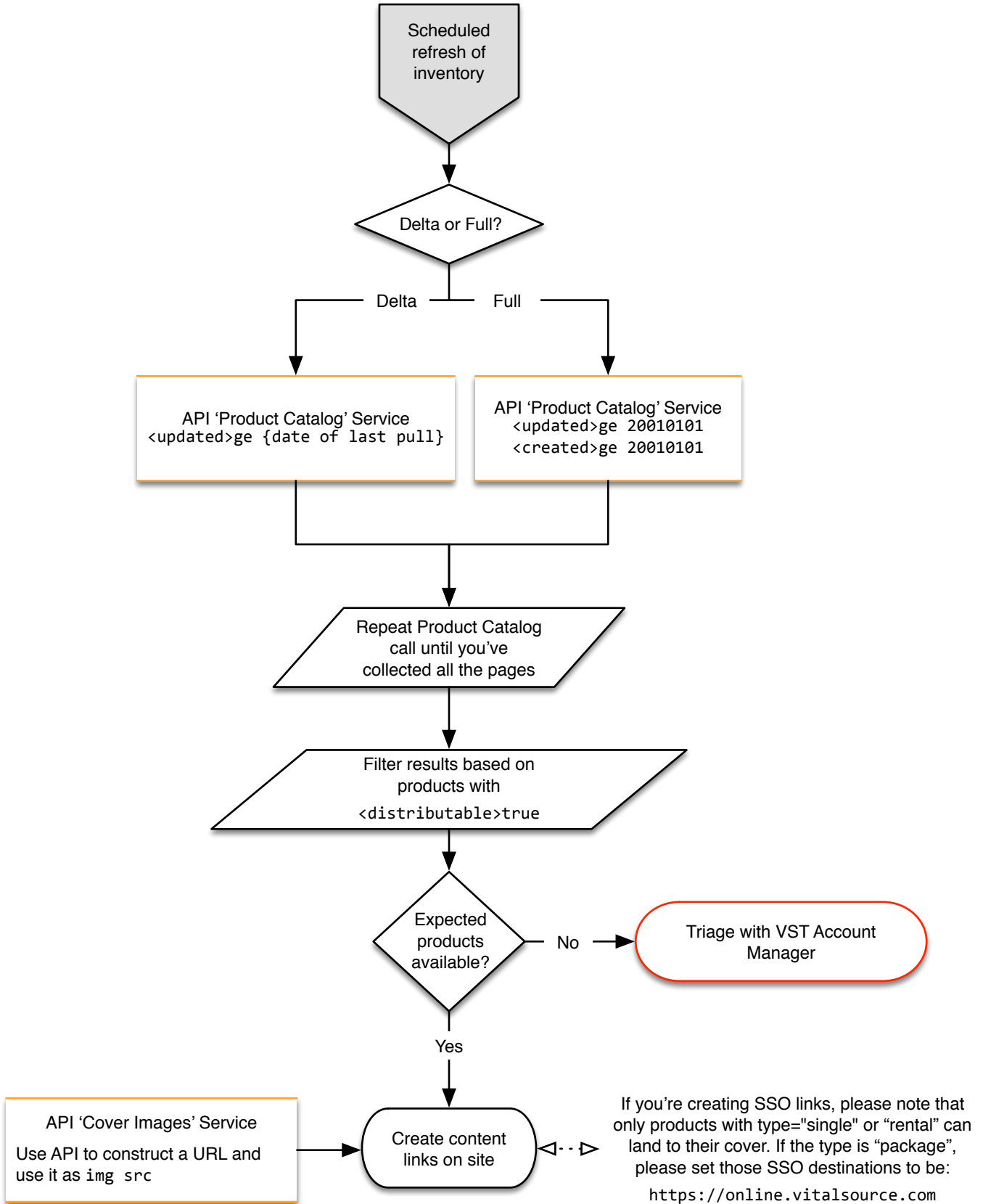




# Setup Account







Content links should only be created pointing to individual assets. SSO Login does not work with product packages that contain multiple assets. In these cases, you can SSO to the user's Bookshelf, but not directly to the product. In this scenario, use this destination: <https://online.vitalsource.com>

SSO is not yet available on our native apps, however you can provide an app link for the user, if they have a license that allows for downloadable access, to open the book through their native Bookshelf app.

